



  
**markmaker®**

*Smart*

*Printex*

**Price & Label Guns  
with Universal Labels**

**PRICE MARKING ► CODING ► DATING**



# Smart & Printex Come to Canada!

**PRICE MARKING ► CODING ► DATING**

Canada is excited to finally get the Smart & Printex lines of labellers & price guns, and universal adhesive labels. Printex is an Italian company that has long been known for its quality, dependability, and design in Europe and the Middle East.

## About Smart & Printex Labellers:

- Fast and easy loading of labels
- 2 year warranty
- Lightweight, ergonomic design and simple operation
- 8 band open code dater has universal date layout, can be YYYYMMDD or DDMMYY
- Standard 7 bands offer more flexibility than the 6 bands, can be \$0.00 or 0,00\$
- Universal adhesive labels for all temperatures -30°C to 80°C
- European quality, made in Italy
- All labellers are sold as starter kit, includes labeller and ink roll, 10 rolls of labels, 1 replacement ink roller - great value!
- Made of durable, high quality engineered polymer frame
- Unexposed label rolls prevent the labels from being crushed or contaminated
- Snap in/out ink roller means no messy replacement
- Self correcting feed mechanism, virtually jam-proof

# Perfect for Any Industry

Our labellers are widely used in many industries such as retail, manufacturing & food preparation. They are perfect for small or large business operations and can be used to supplement current product labelling with a best before date, code number, or price. You can also reinforce your brand by printing your company name on every label! These label markers can also be used as a backup to automated marking systems, enabling you to continue production, saving time and money during downtime.



## Retail

- Pricing
- Coding
- Brand re-enforcement



## Manufacturing

- Product traceability & identification
  - Dates & codes
  - Inventory Control



## Food Preparation

- Best before dates
- Inventory control
- Batch codes

**Made in Italy** 

*Smart*

*Printex*

## Smart 7

lines	bands	label size
1	7	22 x 12 mm

- 7 bands instead of 6 offers more flexibility
- Universal layout, can be \$0.00 or 0,00\$
- Special 10+ quantity pricing



Actual label size

\$439.21

439,21\$

**SUPER  
VALUE KIT**

**Comes as a Kit:**

**Labeller with ink roll**

**10 rolls of labels**

**1 replacement ink roll**



Ink roll for Smart 7  
Part #: SMIR

## Smart 8

lines	bands	label size
1	8	22 x 12 mm

- 8 band open code dater
- Universal date layout can be YYYYMMDD or DDMMYY
- Special 10+ quantity pricing



Actual label size

2021JN03

03JN21

**SUPER  
VALUE KIT**

**Comes as a Kit:**

**Labeller with ink roller**

**10 rolls of labels**

**1 replacement ink roll**



Ink roll for Smart 8  
Part #: SMIR

**SMART 7 BAND LAYOUT****Part #: SM7K**

Number of Bands 7  
 Width of Characters 2.0 mm  
 Height of Characters 4.8 mm

1	1	1	1	1	1	1
2	2	2	2	2	2	2
3	3	3	3	3	3	3
4	4	4	4	4	4	4
5	5	5	5	5	5	5
6	6	6	6	6	6	6
7	7	7	7	7	7	7
8	8	8	8	8	8	8
9	9	9	9	9	9	9
10	10	0	0	0	0	0
11	11	/	.	.	.	CH +DEP
12	12	,	,	,	\$	EA +TAX
13	\$	/	\$	¢	¢	\$ \$
	1	2	3	4	5	6 7

**SMART 8 DATER  
OPEN CODE BAND LAYOUT****Part #: SM8K**

Number of Bands 8  
 Width of Characters 1.5 mm  
 Height of Characters 4.8 mm

1	2	1	1	1	J	A	1	1
2	2	1	2	2	F	E	2	2
3	2	1	3	3	M	R	3	3
4	2	1	4	4	A	L	-	4
5	2	0	5	5	M	A	1	5
6	2	0	6	6	J	N	2	6
7	2	0	7	7	J	L	3	7
8	2	0	8	8	A	U	-	8
9	2	0	9	9	S	E	1	9
10	2	0	0	0	O	C	2	0
11	2	0	1	1	N	O	3	1
12	2	0	2	2	D	E	0	2
13	2	0	3	3	-	-	0	3
	1	2	3	4	5	6	7	8

\*band layouts shown larger

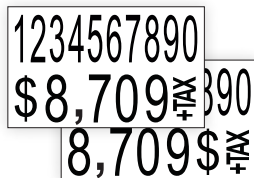
## Smart 10+7

lines	top bands	bottom bands	label size
2	10	7	26 x 16 mm

- Top line has 10 bands for longer codes or part numbers
- Bottom line has 7 bands with a universal layout, can be \$0.00 or 0,00\$
- Special 10+ quantity pricing



Actual label size



**SUPER  
VALUE KIT**

**Comes as a Kit:**  
**Labeller with ink roll**  
**10 rolls of labels**  
**1 replacement ink roll**



Ink roll for Smart 10+7  
Part #: SMIR

## Printex Z S+7

lines	top band	bottom bands	label size
2	slug	7	26 x 12 mm

- Top line is an interchangeable slug, fully customizable
- Save time and money on pre-printed labels
- Bottom 7 bands have universal layout, can be \$0.00 or 0,00\$
- Special 10+ pricing



**Interchangeable Slug:**

- Use 1 price marker for multiple messages
- Create your own custom slug
- 18 x 4 mm max dimension

Stock slug or Custom slug  
Actual Size



**SUPER  
VALUE KIT**

**Comes as a Kit:**  
**Labeller with ink roll**  
**10 rolls of labels • 1 replacement ink roll**  
**3 interchangeable slugs:**  
**SPECIAL • SALE! • VENTE**



Ink roll for Printex Z S+7  
Part #: ZIR

# SMART 10+7 BAND LAYOUT

Part #: SM10+7K

## TOP LINE

Number of Bands 10  
Width of Characters 1.4 mm  
Height of Characters 4.8 mm

## BOTTOM LINE

Number of Bands 7  
Width of Characters 2.0 mm  
Height of Characters 4.8 mm

1	1	1	1	1	1	1	1	1	1
2	2	2	2	2	2	2	2	2	2
3	3	3	3	3	3	3	3	3	3
4	4	4	4	4	4	4	4	4	4
5	5	5	5	5	5	5	5	5	5
6	6	6	6	6	6	6	6	6	6
7	7	7	7	7	7	7	7	7	7
8	8	8	8	8	8	8	8	8	8
9	9	9	9	9	9	9	9	9	9
10	0	0	0	0	0	0	0	0	0
11	\$	10	/	AM	.	.	.	CH	+BP
12	A	11	:	PM	-	-	-	E	+TAX
13	B	12	-	\$	\$	\$	-	\$	\$
	1	2	3	4	5	6	7	8	9

1	1	1	1	1	1	1
2	2	2	2	2	2	2
3	3	3	3	3	3	3
4	4	4	4	4	4	4
5	5	5	5	5	5	5
6	6	6	6	6	6	6
7	7	7	7	7	7	7
8	8	8	8	8	8	8
9	9	9	9	9	9	9
10	10	0	0	0	0	0
11	11	/	.	.	CH	+BP
12	12	,	,	,	\$	E
13	\$	/	\$	¢	¢	\$
	1	2	3	4	5	6

# PRINTEX Z S+7 BAND LAYOUT

Part #: ZS+7K

## TOP LINE

Custom Slug Insert Part #: ZCS  
Maximum Area 4 x 18 mm

## BOTTOM LINE

Number of Bands 7  
Width of Characters 2.0 mm  
Height of Characters 4.8 mm

## Custom Slug Example

**markmaker** 

Custom slug actual size example

**markmaker**   
**\$8.95** <sup>E</sup><sub>A</sub> <sup>+TAX</sup>

Printex Z S+7 Label Gun Kit  
includes these 3 Stock Slugs

**SPECIAL**  
**SALE!**  
**VENTE**

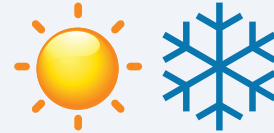
1	1	1	1	1	1	1
2	2	2	2	2	2	2
3	3	3	3	3	3	3
4	4	4	4	4	4	4
5	5	5	5	5	5	5
6	6	6	6	6	6	6
7	7	7	7	7	7	7
8	8	8	8	8	8	8
9	9	9	9	9	9	9
10	10	0	0	0	0	0
11	11	/	.	.	CH	+BP
12	12	,	,	,	\$	E
13	\$	/	\$	¢	¢	\$
	1	2	3	4	5	6

\*band layouts shown larger

- Permanent labels for price marking, coding, and dating
- To be applied at room temperature
- Very clear and straight-forward bilingual packaging
- Comes in resealable clamshell packs of 10-12 rolls
- Fits most labellers that takes the given size



**Reduce your inventory  
knowing that our labels are  
for all temperatures  
(including freezing) at no  
extra cost!**



**80° C to -30° C**

## Custom colours and labels available!

**Call today!**



## 22 x 12 mm labels

rolls rouleaux	per roll par rouleau	total labels étiquettes totales
<b>12</b>	<b>1500</b>	<b>18,000</b>

**Fits Smart 7 & Smart 8**  
**Also fits Garvey and Contact labellers**

**SM2212W**



**SM2212Y**



**SM2212-BB**

BEST BEFORE	MEILLEUR AVANT
MEILLEUR AVANT	BEST BEFORE

Alternating message

## 26 x 12 mm labels

rolls rouleaux	per roll par rouleau	total labels étiquettes totales
<b>10</b>	<b>1500</b>	<b>15,000</b>

**Fits Smart 10+7**

**SM2612W**

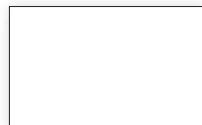


## 26 x 16 mm labels

rolls rouleaux	per roll par rouleau	total labels étiquettes totales
<b>10</b>	<b>1000</b>	<b>10,000</b>

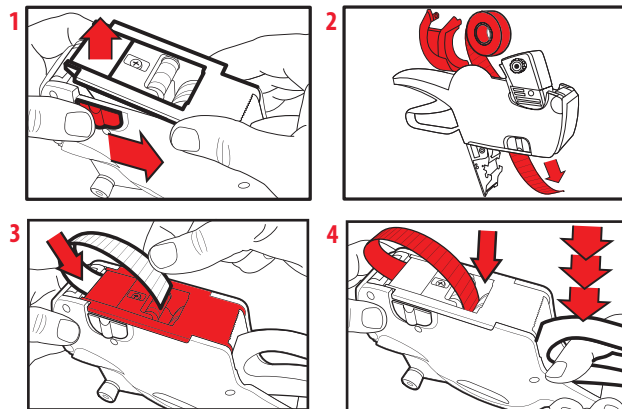
**Fits Printex Z+7**

**SM2616W**



## How to reload labels - Printex only

1. Open the bottom assembly by sliding the two side locks back. You may have to press the handle for it to open.
2. Now open the top label cover by pulling up. Feed a strip of labels straight down the middle of the labeller so that it comes out the botton, making sure that the label is facing forward/up. Drop the roll into the top and close the label cover.
3. Pull an 8" strip of the labels out from the labeller and close the bottom assembly until it snaps.
4. Feed labels straight down into the bottom drive assembly. Now squeeze the labeler handle to advance the strip of labels through the bottom assembly. It may stick a bit at first, but within a few cycles, the labeller will align itself to print in the proper area of the label.



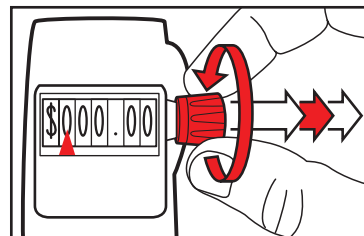
## How to reload labels - Smart only

1. Open the bottom assembly by pulling up on the rounded end.
2. Now open the top label cover by pulling up on it.
3. Feed a strip of labels straight down the middle of the machine so that it comes out the botton, making sure that the label is facing forward/up. Put the roll on the roll holder and close the label cover. Pull an 8" strip of the labels out from the labeller.
4. Close the smaller back bottom assembly first, then with the labels running straight back, snap close the larger bottom assembly. Squeeze the labeller handle to advance the strip of labels through the bottom assembly. The handle may stick a bit at first, but within a few cycles, the labeller will align itself to print in the proper area of the label.



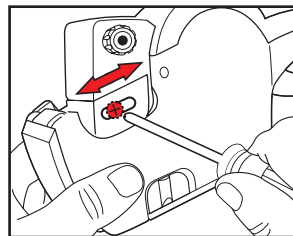
## How to set the print impression

1. Move the indicator marker to the position you desire to change by pulling the setting knob out to the right.
2. The white portion of the band must be visible in the display window (not the dark negative side).
3. After setting the characters, the knob must be returned to the print position by pushing it all the way left.



## How to change the print calibration

1. Gently loosen the screws on both sides of the print head.
2. Move the print head forward or back as needed to make the print location higher or lower on the labels.
3. Tighten screw.



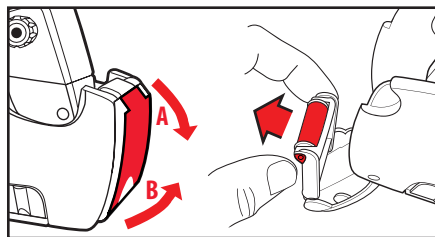
✗ Calibration  
WRONG



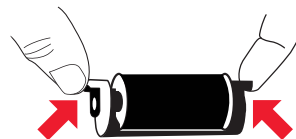
✓ Calibration  
RIGHT

## How to change ink roll

1. When changing the ink roll, you should wear rubber gloves to avoid getting ink on your hands or work area. Do not work over material you would not want ink on.
2. Access the ink roller by opening the front door. For Smart labeller, pull the front door down and out (A). For Printex labeller, pull the front door up and out (B).
3. Pinch the sides of the roller and forcefully pull the ink roll out to unsnap it. For Smart pinch the sides of the roll (C), for Printex pinch the clips (D). For an easier release, unsnap one side at a time with a twisting motion. Dispose of the used ink roller.
4. Snap the new ink roll into the label labeller and close the front door.
5. Never re-ink an ink roller. The rollers are not designed to absorb ink and will drip ink inside your labeller and damage it.



C Smart Ink Roll



D Printex Ink Roll

*Smart  
Printex*

# Price & Label Guns with Universal Labels

DISTRIBUTED BY:

